

Our associates will ensure the tool works properly before you leave the store. If you experience issues with the tool while completing your project, simply bring it back to the Tool Rental Center to get a replacement. If you purchase Damage Protection at the time of your rental, you are not responsible for repair costs for tools that break due to normal use.





Mi-T-M[®]
CORPORATION



When using this product, basic precautions should always be observed, including the following.
READ ALL SAFETY WARNINGS BEFORE USING THIS DETERGENT INJECTOR.

BRASS DETERGENT INJECTOR
AW-8300-0002

Manufactured by Mi-T-M
8650 Enterprise Drive, Peosta IA 52068
563-556-7484/ Fax 563-556-1235

SAFETY WARNINGS



HAZARD	POTENTIAL CONSEQUENCE	PREVENTION
RISK OF INJECTION OR SEVERE CUTTING INJURY	Serious injury or death could occur from high pressure spray penetrating the skin.	<p>KEEP AWAY FROM THE SPRAY: If an accident does occur, and the spray appears to have penetrated the skin, SEEK EMERGENCY MEDICAL CARE. DO NOT TREAT AS A SIMPLE CUT. Be prepared to tell a physician exactly what type of detergent you are using. This information is provided on the Mi-T-M Detergent Label and the MSDS (Material Safety Data Sheet) provided with your detergent.</p> <p>Before attempting to install the injector, make sure the pressure washer is shut off. Relieve pressure in the system.</p> <p>NEVER spray at yourself or any one else.</p> <p>NEVER put your hand, fingers or body directly over the spray nozzle.</p> <p>Maintain a safe distance from persons while operating this unit.</p> <p>DO NOT allow children or pets near the area when operating the unit.</p>
RISK OF BODILY INJURY	Serious injury can occur from detergent injector applications.	<p>Always wear eye protection when using the Detergent Injector. Other protective clothing such as a rubber suit, gloves, respirator, etc., may be necessary for additional protection.</p> <p>Do not use solvents, highly corrosive detergent or acid type cleaners with this injector. Do not use this injector to dispense hazardous detergents. Use only Mi-T-M detergents with the injector and mix these detergents only with water.</p> <p>Mi-T-M Detergents contain surfactants which may be harmful if swallowed.</p> <p>Stay alert! Watch what you are doing. Do not operate the unit or injection feature under the influence of alcohol or drugs.</p> <p>If the detergent hose, strainer or components show any sign of damage, replace before continuing.</p> <p>Read all instructions in both this manual and the manual accompanying the pressure washer you are using with this Detergent Injector.</p>
RISK OF EQUIPMENT DAMAGE	Risk of major repair.	Do not alter the injection feature in any manner not prescribed in this manual. Use only genuine Mi-T-M replacement parts for necessary repairs.

!SAVE THESE INSTRUCTIONS!

INSTALLATION & PREPARATION

INJECTOR INFORMATION:

1. This injector was designed for use with specially formulated, highly concentrated Mi-T-M Detergents. NEVER mix detergent with anything but water!
2. Simply follow the instructions on the container for proper dilution. Keep in mind this injector further dilutes the detergent at an approximate 1 part detergent to 12 parts water ratio. (Detergent siphon ratio may vary depending upon the temperature or viscosity of the detergent being used.)

NOTE: Before beginning a cleaning job, always spot test the detergent on the area to be cleaned to determine if a detergent reaction may occur. Be certain to rinse cleaning surface thoroughly with water.

INSTALLATION:

1. Ensure the pressure washer is off, the water supply is off and that all pressure is relieved from the system by pointing the gun in a safe direction and squeezing the trigger.
2. Disconnect the high pressure discharge hose from the water outlet on the pressure washer.
3. Quick-connect the detergent injector into the water outlet on the pressure washer.
4. Reattach the high pressure discharge hose to the female quick-connect on the detergent injector.
5. Turn the adjustment knob on the detergent injector completely counterclockwise to the fully open position. Siphoning rate can be adjusted by turning the adjustment knob from a clockwise to a counterclockwise position. Fully clockwise is closed.
6. Fully submerge the strainer end of the detergent hose into the detergent solution.

⚠WARNING

This product contains one or more chemicals known to the State of California to cause cancer and birth defects or other reproductive harm.

START-UP & OPERATION:

1. Ensure the trigger gun is locked in the "OFF" position and insert a 40° nozzle into the wand assembly.
2. Refer to your pressure washer manual for correct start-up procedures for the pressure washer you are using with this detergent injector. Be certain to read and follow all Safety Warnings in both the pressure washer manual and in this detergent injector manual, before starting the unit.
3. Once the pressure washer is started, wet the area to be cleaned using the 40° nozzle.
4. Lock the trigger gun in the "OFF" position and replace the 40° nozzle with the 6540°(black colored) detergent nozzle which was shipped with your detergent injector. This injector was designed for low pressure application only. It will not allow detergents to be introduced into the system unless the detergent nozzle is installed.
5. After connecting the detergent nozzle into the end of the wand, unlock the trigger gun and squeeze the trigger. Low pressure water will spray out of the nozzle, followed shortly by the detergent water mixture.

NOTE: If this does not occur within one minute of triggering the gun, refer to the troubleshooting section.

6. Hold the gun/wand assembly approximately two feet from the surface being cleaned and mist-wet the area with cleaning solution. Start spraying from the bottom and moving up using long, overlapping strokes. Applying detergents from the bottom up helps avoid streaking. Allow to soak briefly. DO NOT let detergent dry on surface as it will become extremely hard to remove!
7. Lock the gun in the "OFF" position and replace the 6540° nozzle with the desired high pressure nozzle. Point the trigger gun toward the cleaning surface and squeeze the trigger. Cleaning solution will exit the high pressure nozzle until all the remaining detergent in the siphon mode is purged from the system. Begin rinsing with the high pressure spray, keeping the nozzle at a 15° angle, approximately from the surface to "chisel" the dirt off of the area. For best rinsing results, start at the top and work down.

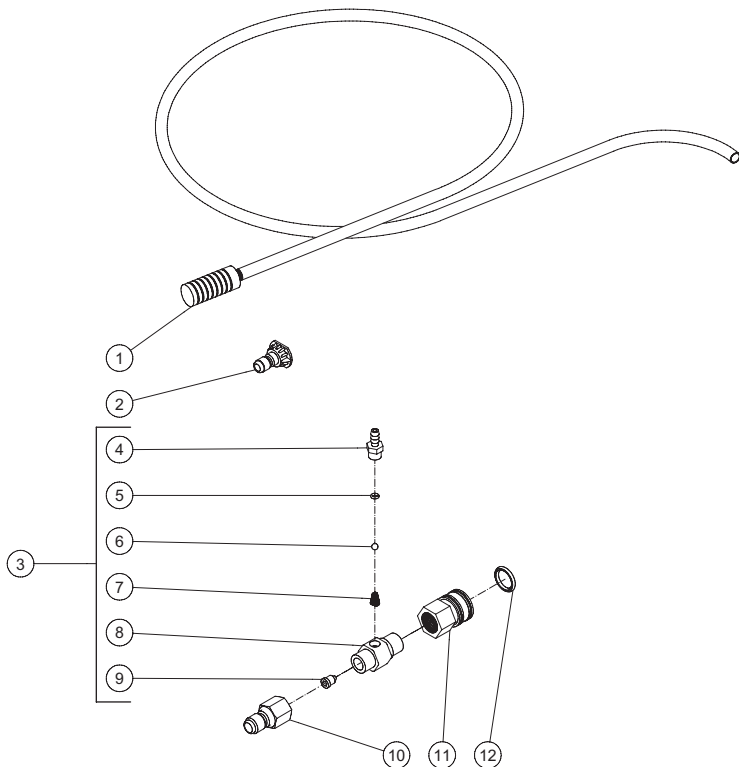
NOTE: DO NOT use the 0° nozzle for rinsing as this can gouge the area being cleaned.

8. If some dirt remains, repeat the procedure outlined above, allowing the detergent to soak a little longer. DO NOT allow detergent to dry on the surface!
9. When done using the detergent injector, always run a gallon of clean water through the injector to prevent corrosion of parts.
10. When not using the injector, remove it from the unit. This will give the couplers longer life and relieves stress on internal components of the injector.

TROUBLESHOOTING:

SYMPTOM	POSSIBLE CAUSE	ACTION
No Detergent	Detergent injector not installed.	Install Detergent Injector (See installation instructions).
	Detergent nozzle not installed.	Install 6540° (black) nozzle.
	Detergent strainer not completely submerged in detergent solution.	Submerge strainer.
	Detergent strainer obstructed.	Inspect, clean or replace as necessary.
	Detergent hose cut or obstructed.	Inspect, clean or replace.
	Ball in Detergent injector assembly stuck.	Disassemble. Clean or replace parts.
Detergent flows back into container.	Ball in Detergent injector missing or corroded.	Disassemble and replace.
	O-ring damaged or missing.	Disassemble and replace.

DETERGENT INJECTOR AW-8300-0002



⚠WARNING
Warning: This product contains lead, a chemical known to the State of California to cause birth defects or other reproductive harm.
Wash your hands after handling this product.

AW-8300-0002 110910 RSW			
DETERGENT INJECTOR AW-8300-0002			
REF #	DESCRIPTION	PART #	QTY
1	Detergent Hose	19-0233	1
2	Nozzle	18-0386	1
3	Detergent Injector (Inc. 4, 5, 6, 7, 8, 9)	50-0190	1
4	Hose Barb	N/A	1
5	O-ring (See 70-0395)	N/A Sep.	1
6	Ball (See 70-0395)	N/A Sep.	1
7	Spring (See 70-0395)	N/A Sep.	1
8	Chemical Injector Housing	N/A	1
9	Injector Nozzle	N/A	1
10	Quick Connect	17-0006	1
11	Quick Connect Socket	17-0004	1
12	O-ring	25-0123	1
-	Injector Repair Kit (Inc. 5, 6, 7)	70-0395	1